

# Model:UT-752

(Product name: PCI multi-serial card)

## Datasheet

## 1. Overview

The UT-752 is a general PCI serial card designed for POS, ATM and other applications that can be used in automated system manufacturing and system integration. The UT-752 provides 2 RS-232 serial ports that can connect to a variety of serial devices such as PCs, terminals, modems, printers, scanners and etc. Each port is capable of data transfer rates up to 115.2Kbps, providing modem control signals to ensure serial device peripheral compatibility. the UT-752 can operate under both 3.3V and 5V PCI buses, allowing the multi-serial card to be installed in any available PC or server.

## 2. Major Functions & Features

- Support RS-485 2 ports PCI multi-serial port

## 3. Technical Parameters

- Hardware interface  
Connection type: 2 DB9 male pins  
Bus:32 bit Universal PCI
- Signal RS-232: DCD, RXD, TXD, DTR, GND, DSR, RTS, CTS, RI
- Transmission rate: 300bps-115.2Kbps
- Data bit: 5,6,7,8
- Stop bit: 1,1.5,2
- Check bit: None, Even, odd
- Flow control: RTS/CTS XON/XOFF
- Operating temperature: 0~70 °C
- Support system: Win98/2000, WinXP/2003/Vista/2008 32/64, DOS/Linux2.4/2.6

## 4. Hardware definition and initial definition

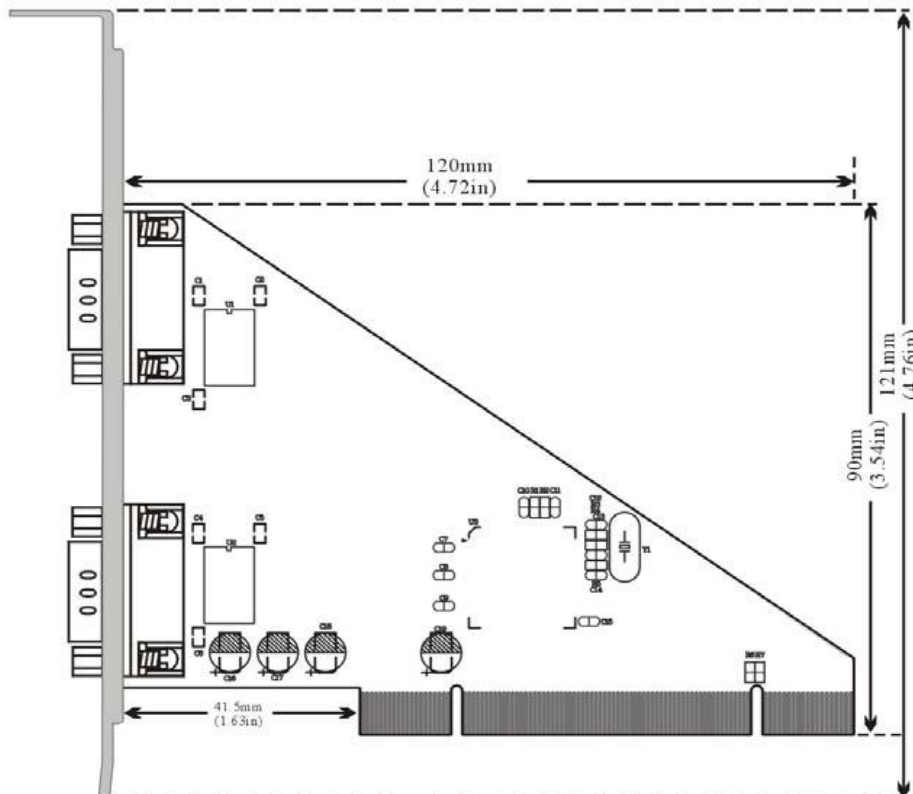
DB9 pin type: RS-232C Output signal pin assignment (Port1-Port2)

DB9 pin type(PIN)	RS-232 interface signal
1	GND
2	RXD
3	TXD
4	DTR
5	GND
6	DSR
7	RST
8	CTS
9	RI

## 5. Product View (Appearance)



## 6. Structure Dimensions



## 7. Ordering Information

Model	Signal/Interface		Port Number		Protection level	Baud rate	Operating Environment			Power	
	PCI	RS-232	PCI	RS-232			Temperature		Humidity	plug and play	External power
					0~70°C		-40~85°C	5~95%			
UT-752	Universal	DB9	1	2	RS232	300bps-115.2kbps	√		√	√	